

TWIN KNOLLS

2570 NE Twin Knolls Drive | Bend, Oregon 97701

FOR LEASE



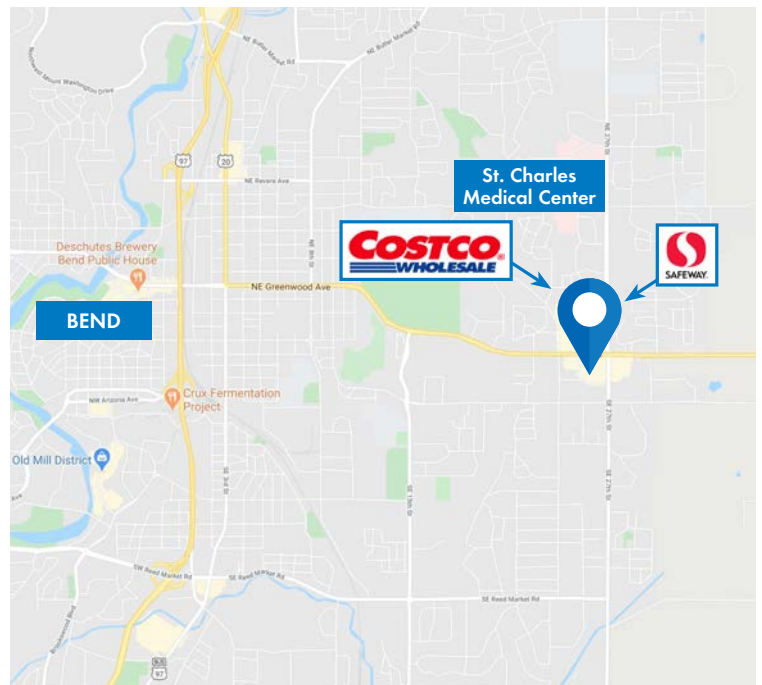
RETAIL SPACE FOR LEASE

DETAILS

- Suite 120: ± 2,082 SF
 - Suite 125: ± 1,935 SF
 - Rate: Call for details + NNN
- CAN BE COMBINED FOR ± 4,017 SF**

FEATURES

- **Suite 120: ± 2,082 SF**
 - Reception with multiple offices
- **Suite 125: ± 1,935 SF**
 - Open layout retail space
 - Back half includes in-suite bathroom and shower
- Ample on-site parking
- Monument and building signage available
- Co-tenants include Timbers Tavern, Tan Republic, Express Eco Laundromat
- Walking distance to The Forum Shopping Center, Costco, Safeway, Whole Foods, and other retailers



03.04.2022

For more information or a property tour, please contact:

LUIS MARTIN DEL CAMPO

503.225.8422

LuisM@norris-stevens.com

Norris & Stevens

INVESTMENT REAL ESTATE SERVICES

900 SW 5th Avenue • 17th Floor • Portland, OR 97204
503.223.3171 • norris-stevens.com



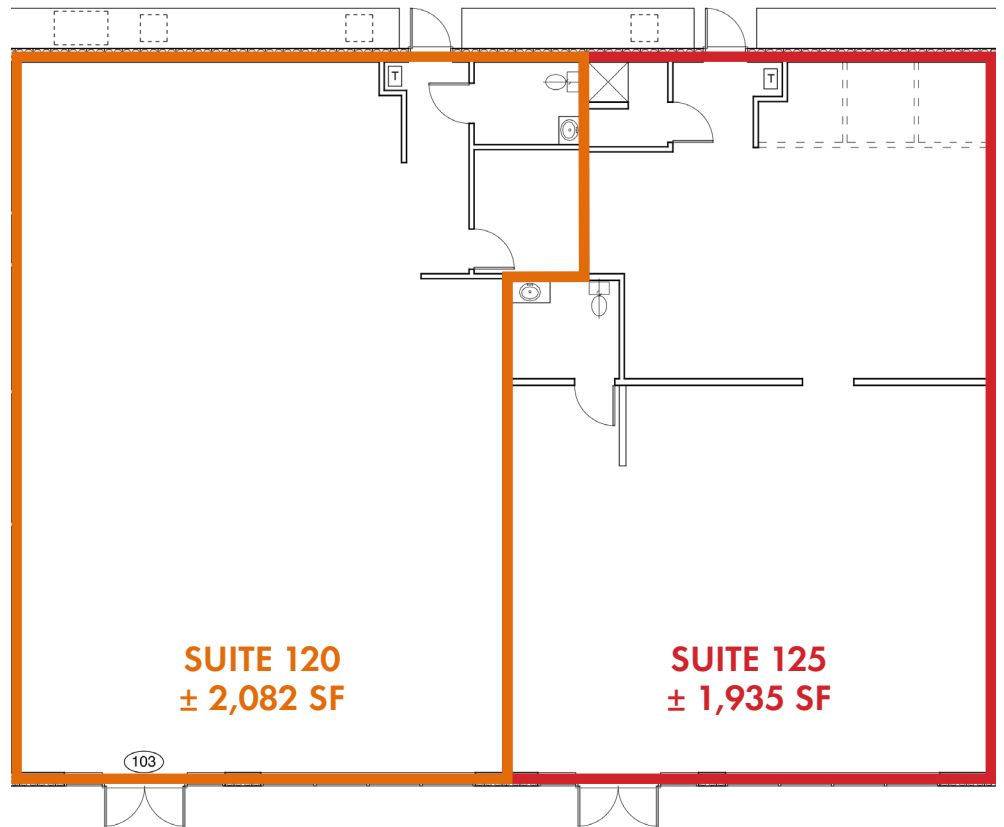
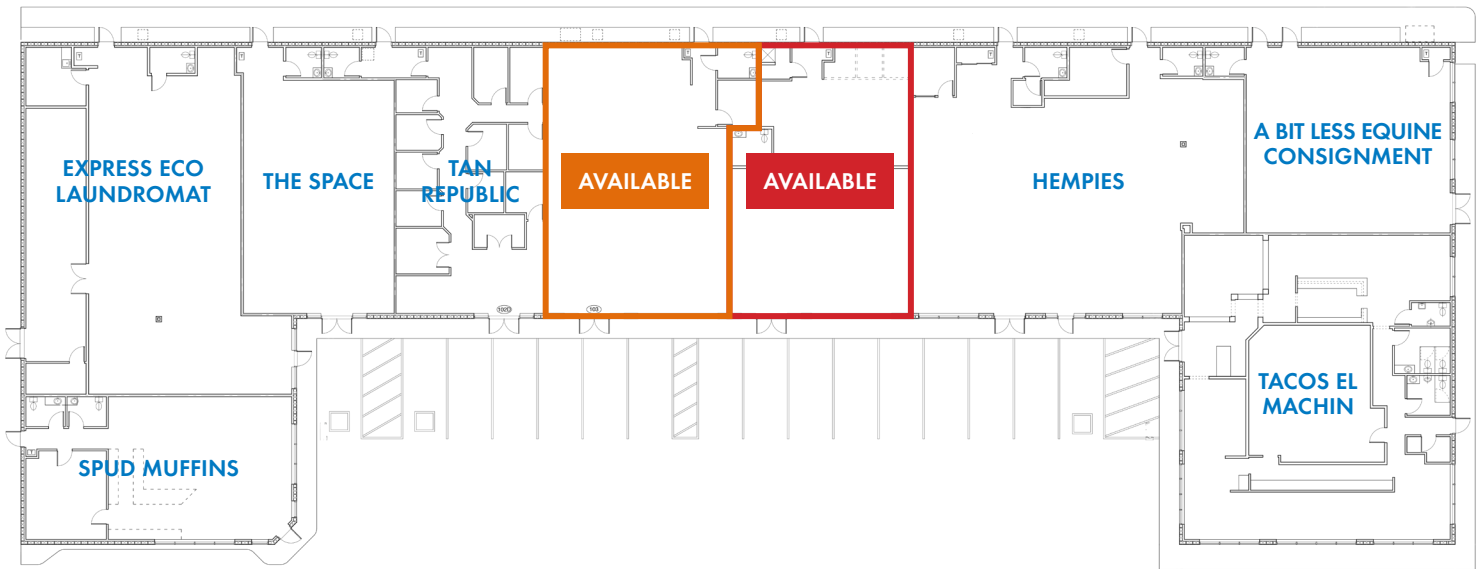
Information contained herein has been obtained from others and considered to be reliable; however, a prospective purchaser or lessee is expected to verify all information to his/her own satisfaction.

TWIN KNOLLS

2570 NE Twin Knolls Drive | Bend, Oregon 97701

FOR LEASE

PROPERTY PHOTOS & FLOOR/SITE PLAN



For more information or a property tour, please contact:

LUIS MARTIN DEL CAMPO

503.225.8422

LuisM@norris-stevens.com

Norris & Stevens

INVESTMENT REAL ESTATE SERVICES



Information contained herein has been obtained from others and considered to be reliable; however, a prospective purchaser or lessee is expected to verify all information to his/her own satisfaction.

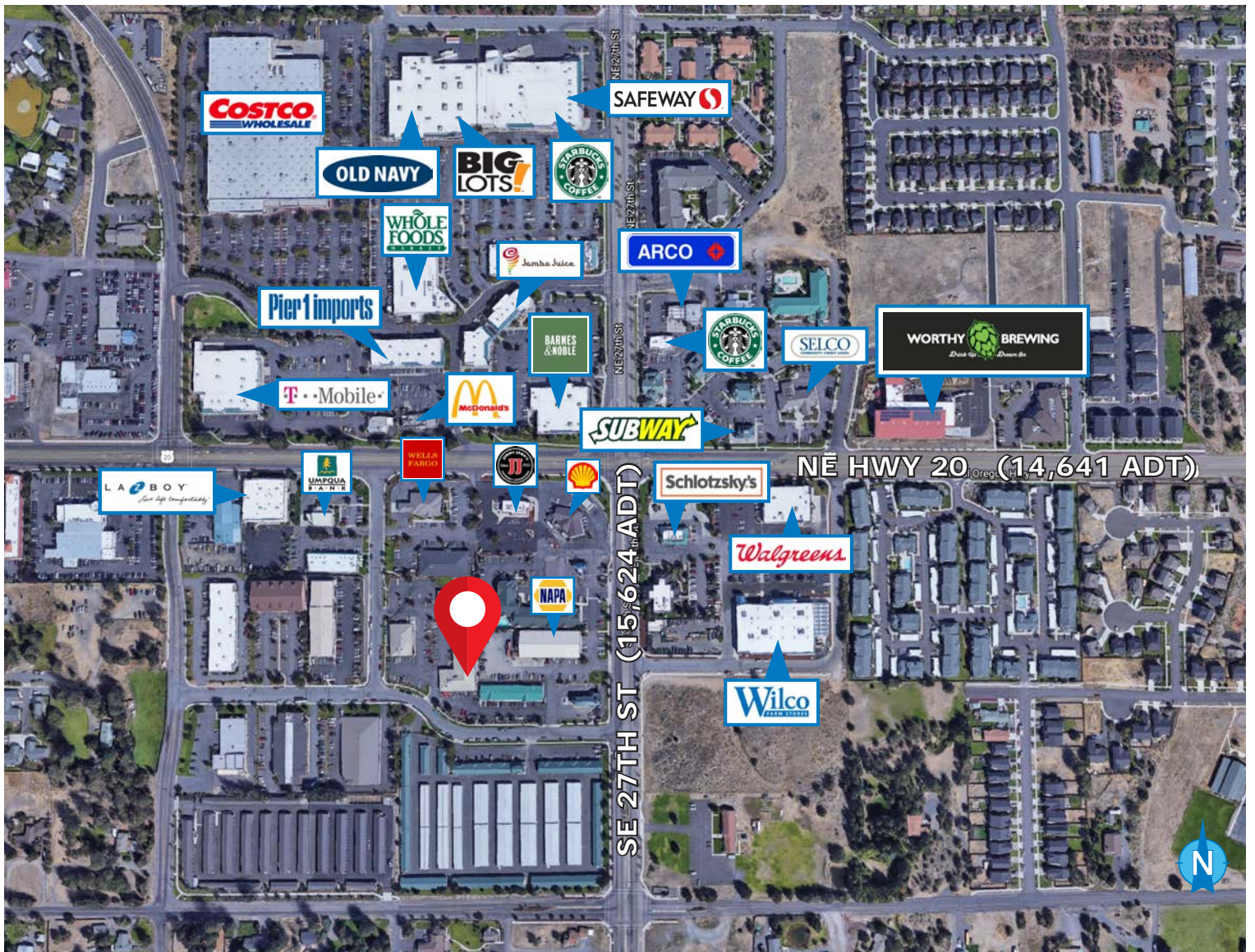
900 SW 5th Avenue • 17th Floor • Portland, OR 97204
503.223.3171 • norris-stevens.com

TWIN KNOLLS

2570 NE Twin Knolls Drive | Bend, Oregon 97701

FOR LEASE

SURROUNDING AREA MAP



For more information or a property tour, please contact:

LUIS MARTIN DEL CAMPO

503.225.8422

LuisM@norris-stevens.com

Norris & Stevens

INVESTMENT REAL ESTATE SERVICES



Information contained herein has been obtained from others and considered to be reliable; however, a prospective purchaser or lessee is expected to verify all information to his/her own satisfaction.

900 SW 5th Avenue • 17th Floor • Portland, OR 97204
503.223.3171 • norris-stevens.com