

HEAVY INDUSTRIAL LAND

12299 N Lombard St | Portland, OR 97203

FOR SALE



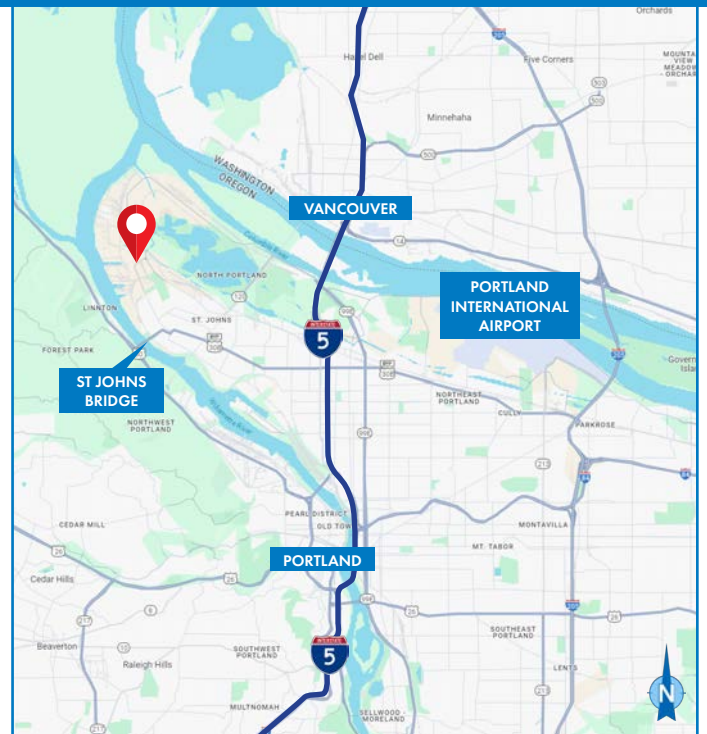
LAND FOR SALE

DETAILS

- Land area: ± 2.30 AC (100,188 SF)
- Price: \$1,500,000
- Zoning: Heavy Industrial (I-H)

FEATURES

- 2.1 miles from the St. Johns Bridge
- Flat and graveled



07.18.2024

For more information or a property tour, please contact:

GABE SCHNITZER
503.225.8443
GabeS@norris-stevens.com

GREG NESTING
503.225.8430
GregN@norris-stevens.com

Norris & Stevens

INVESTMENT REAL ESTATE SERVICES



Information contained herein has been obtained from others and considered to be reliable; however, a prospective purchaser or lessee is expected to verify all information to his/her own satisfaction.

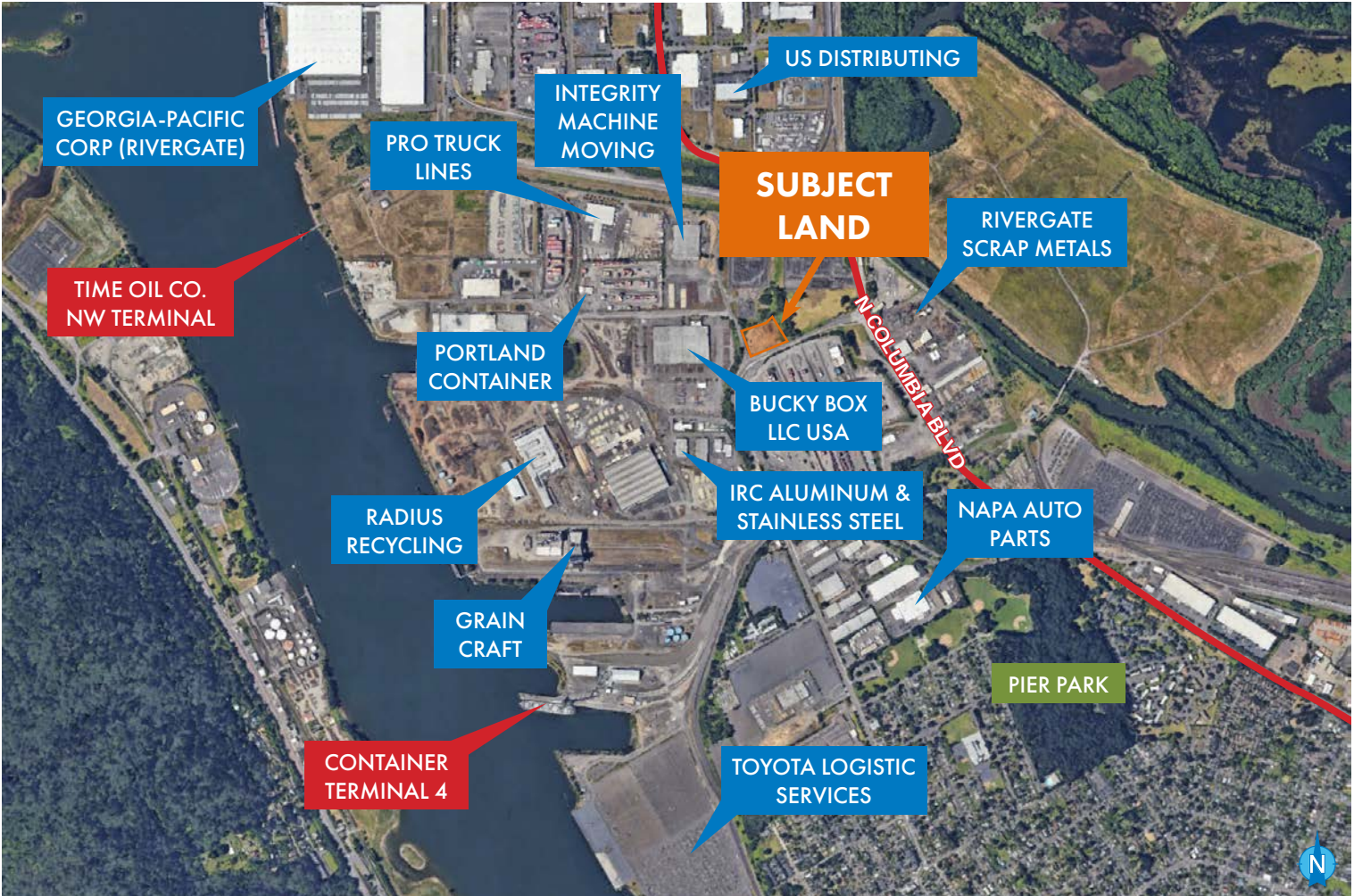
900 SW 5th Avenue • 17th Floor • Portland, OR 97204
503.223.3171 • norris-stevens.com

HEAVY INDUSTRIAL LAND

12299 N Lombard St | Portland, OR 97203

FOR SALE

LOCATION OVERVIEW



For more information or a property tour, please contact:

GABE SCHNITZER
503.225.8443
GabeS@norris-stevens.com

GREG NESTING
503.225.8430
GregN@norris-stevens.com

Norris & Stevens

INVESTMENT REAL ESTATE SERVICES



Information contained herein has been obtained from others and considered to be reliable; however, a prospective purchaser or lessee is expected to verify all information to his/her own satisfaction.

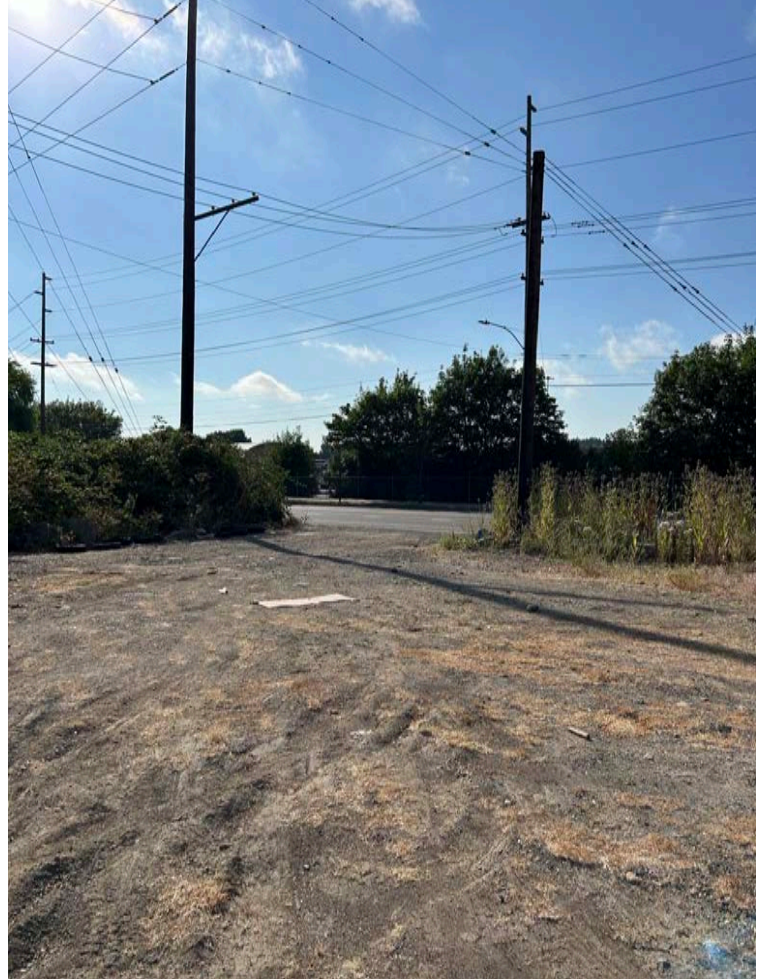
900 SW 5th Avenue • 17th Floor • Portland, OR 97204
503.223.3171 • norris-stevens.com

HEAVY INDUSTRIAL LAND

12299 N Lombard St | Portland, OR 97203

FOR SALE

PROPERTY PHOTOS



For more information or a property tour, please contact:

GABE SCHNITZER
503.225.8443
GabeS@norris-stevens.com

GREG NESTING
503.225.8430
GregN@norris-stevens.com

Norris & Stevens

INVESTMENT REAL ESTATE SERVICES



Information contained herein has been obtained from others and considered to be reliable; however, a prospective purchaser or lessee is expected to verify all information to his/her own satisfaction.

900 SW 5th Avenue • 17th Floor • Portland, OR 97204
503.223.3171 • norris-stevens.com