

# THE BAILEY BUILDING

5441 S Macadam Ave | Portland, OR 97239

FOR LEASE

NEW OWNERSHIP!



## DETAILS

- **Rate:** \$25 PSF
- **Available space:**
  - First Floor: ± 3,024 SF  
Divisible by 3 separate suites
  - Second Floor: ± 4,318 SF  
Divisible by 3 separate suites

## FEATURES

- Parking available
- On frequent bus line
- Conveniently located, walking distance to amenities
- Quiet building with quick in-and-out from location
- Close to I-5, I-405, and Hwy 43
- 5 minutes to Lake Oswego and Downtown Portland
- Elevator served
- Natural light
- Adjacent to Water Tower and John's Landing
- New ownership!



For more information or a property tour, please contact:

10.21.2024

**DUANE LINK**

503.225.8465

DuaneL@norris-stevens.com

**DOUG CARTER**

503.225.8499

DougC@norris-stevens.com

**Norris & Stevens**

INVESTMENT REAL ESTATE SERVICES



Information contained herein has been obtained from others and considered to be reliable; however, a prospective purchaser or lessee is expected to verify all information to their own satisfaction.

900 SW 5th Avenue • 17th Floor • Portland, OR 97204  
503.223.3171 • norris-stevens.com

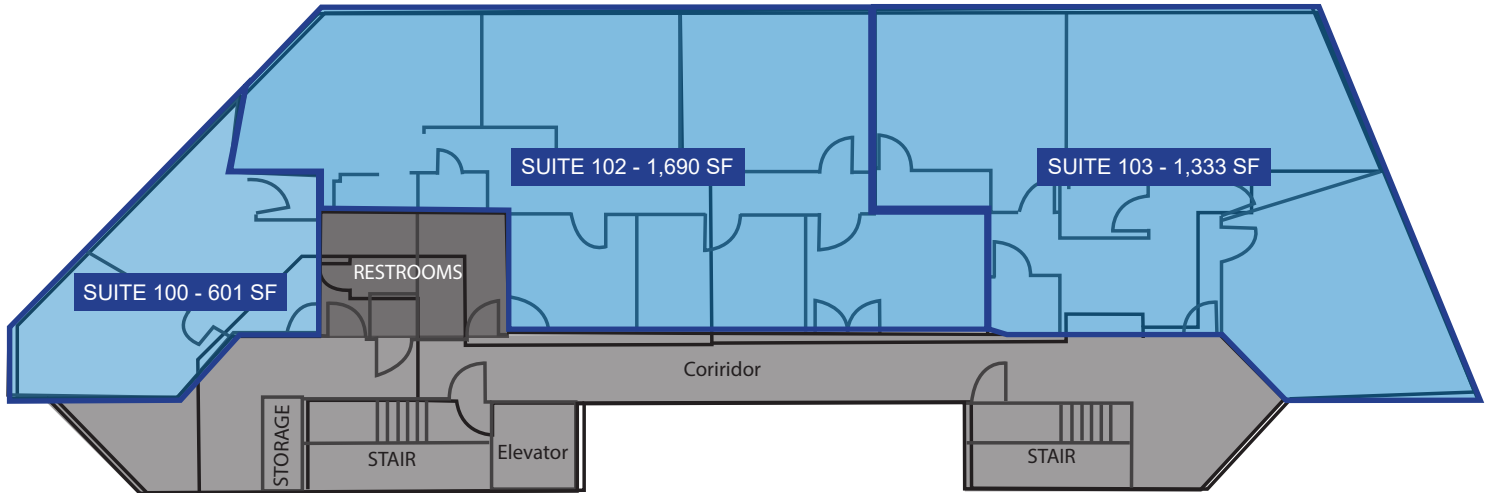
# THE BAILEY BUILDING

5441 S Macadam Ave | Portland, OR 97239

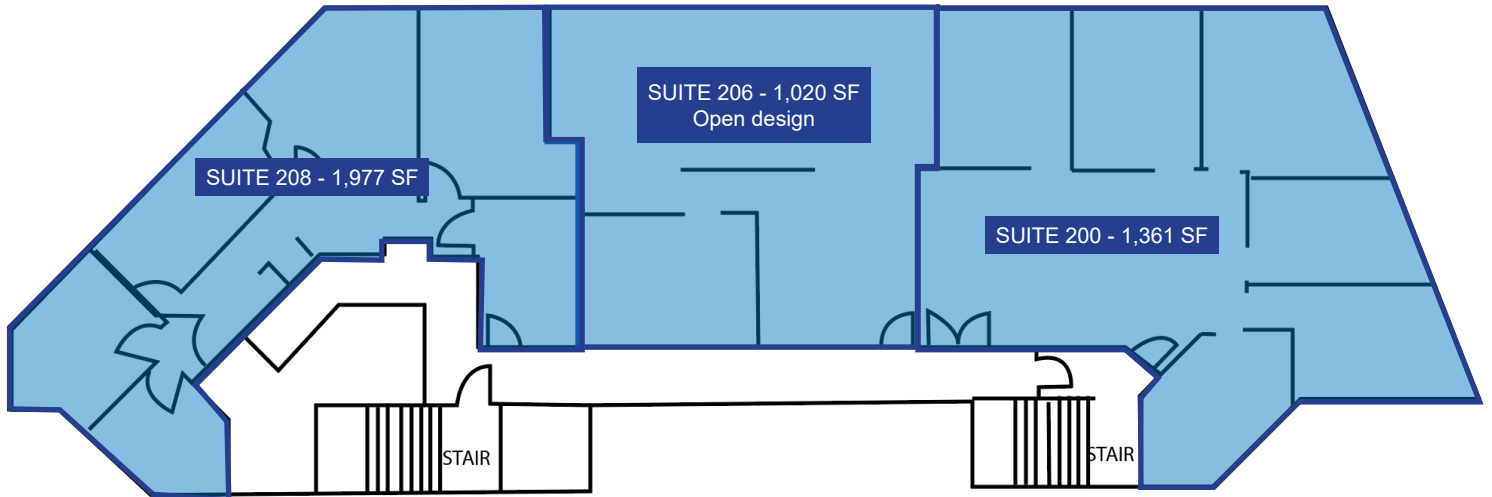
FOR LEASE

## FLOOR PLANS

### FIRST FLOOR



### SECOND FLOOR



For more information or a property tour, please contact:

10.21.2024

**DUANE LINK**

503.225.8465

DuaneL@norris-stevens.com

**DOUG CARTER**

503.225.8499

DougC@norris-stevens.com

**Norris & Stevens**

INVESTMENT REAL ESTATE SERVICES



Information contained herein has been obtained from others and considered to be reliable; however, a prospective purchaser or lessee is expected to verify all information to their own satisfaction.

900 SW 5th Avenue • 17th Floor • Portland, OR 97204  
503.223.3171 • [norris-stevens.com](http://norris-stevens.com)



# THE BAILEY BUILDING

5441 S Macadam Ave | Portland, OR 97239

## FOR LEASE

### PROPERTY PHOTOS



For more information or a property tour, please contact:

10.21.2024

**DUANE LINK**

503.225.8465

DuaneL@norris-stevens.com

**DOUG CARTER**

503.225.8499

DougC@norris-stevens.com

## Norris & Stevens

INVESTMENT REAL ESTATE SERVICES



Information contained herein has been obtained from others and considered to be reliable; however, a prospective purchaser or lessee is expected to verify all information to their own satisfaction.

900 SW 5th Avenue • 17th Floor • Portland, OR 97204  
503.223.3171 • [norris-stevens.com](http://norris-stevens.com)