

# 2242 N WILLIAMS AVE

Portland, OR 97227

## FOR LEASE



## INDUSTRIAL WAREHOUSE FOR LEASE

### DETAILS

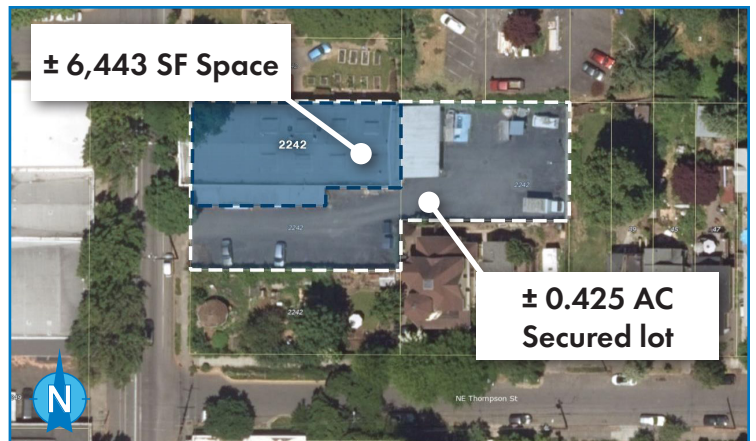
- Space size:  $\pm 6,443$  SF  
 $\pm 0.425$  AC secured lot
- Lease rate: Call brokers for rate
- Zoning: CM2 / R2.5 (East lot)

### FEATURES

- Off street parking available
- Functional floor plans
- Fenced and paved yard offers ample outdoor storage space or additional parking
- Rare North Portland location offers easy access to downtown Portland, Vancouver, and PDX



DEMOGRAPHICS	1 MILE	3 MILES
Population	27,704	221,055
Households	14,914	115,409
Median Age	38.1	38.2
Median Household Income	\$93,798	\$100,467
Daytime Employees	34,281	224,214



10.09.2024

For more information or a property tour, please contact:

**GABE SCHNITZER**

503.225.8443

GabeS@norris-stevens.com

**GREG NESTING**

503.225.8440

GregN@norris-stevens.com

**LUIS MARTIN DEL CAMPO**

503.416.8422

LuisM@norris-stevens.com

## Norris & Stevens

INVESTMENT REAL ESTATE SERVICES



Information contained herein has been obtained from others and considered to be reliable; however, a prospective purchaser or lessee is expected to verify all information to their own satisfaction.

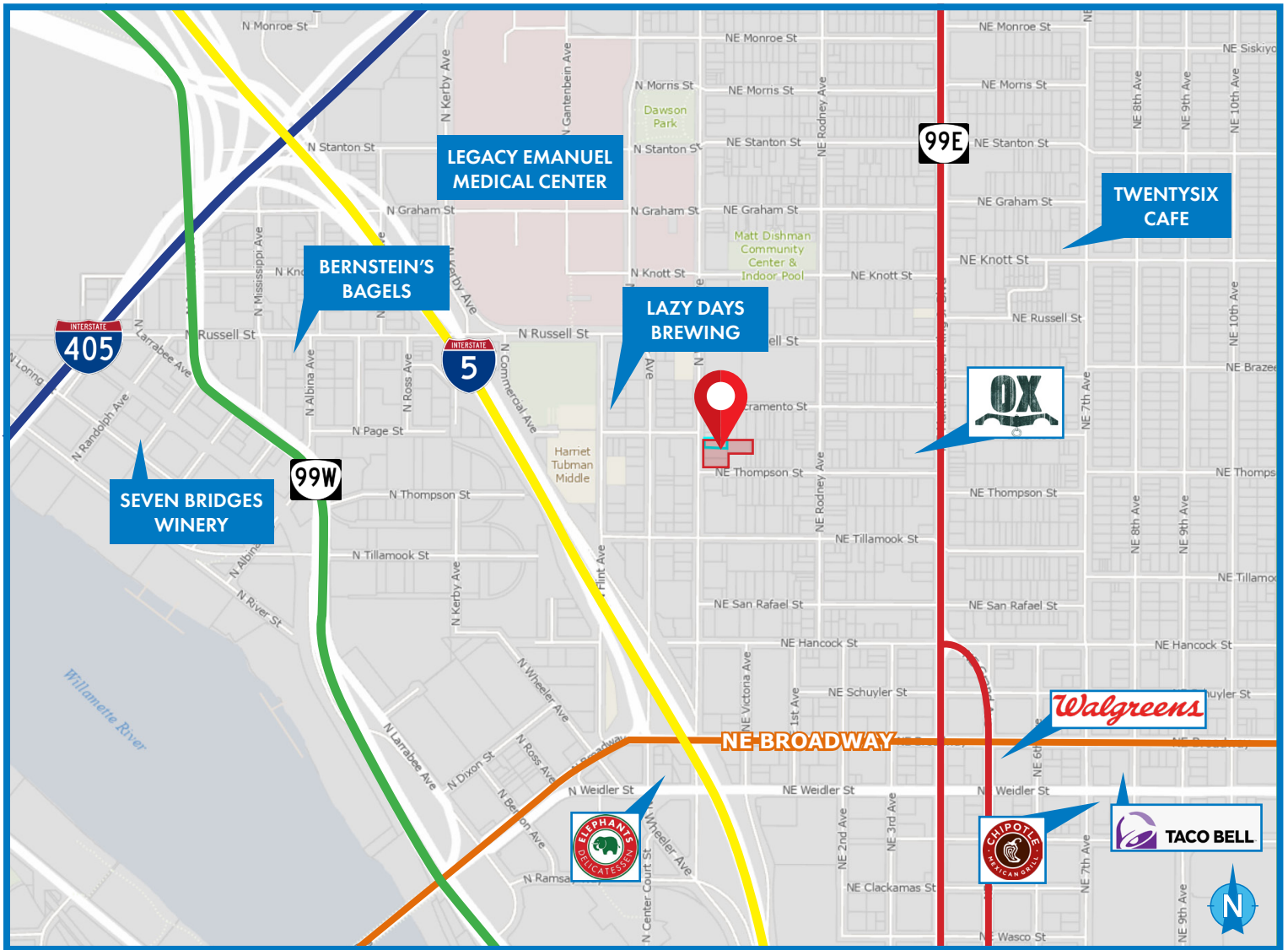
900 SW 5th Avenue • 17th Floor • Portland, OR 97204  
503.223.3171 • norris-stevens.com

# 2242 N WILLIAMS AVE

Portland, OR 97227

# FOR LEASE

MAP



WALK SCORE

93

BIKE SCORE

100

For more information or a property tour, please contact:

**GABE SCHNITZER**

503.225.8443

GabeS@norris-stevens.com

**GREG NESTING**

503.225.8440

GregN@norris-stevens.com

**LUIS MARTIN DEL CAMPO**

503.416.8422

LuisM@norris-stevens.com

## Norris & Stevens

INVESTMENT REAL ESTATE SERVICES



Information contained herein has been obtained from others and considered to be reliable; however, a prospective purchaser or lessee is expected to verify all information to their own satisfaction.

900 SW 5th Avenue • 17th Floor • Portland, OR 97204

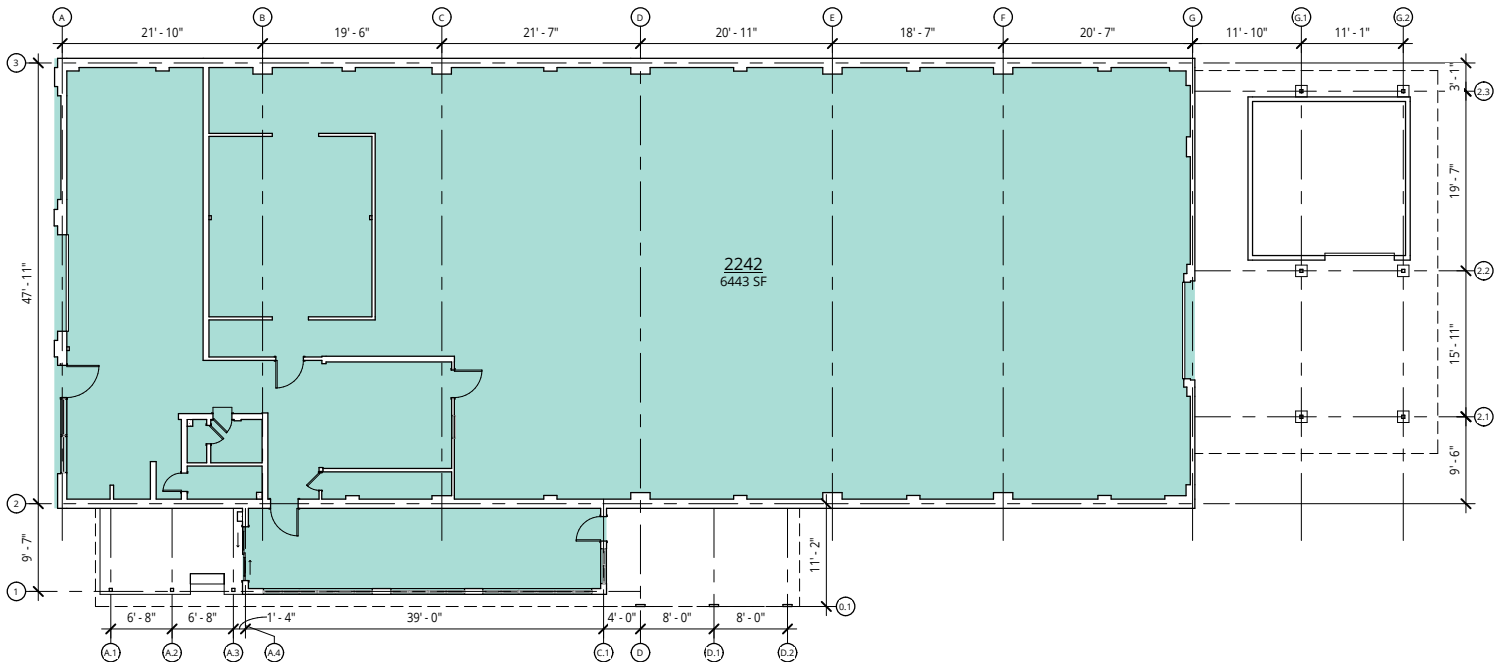
503.223.3171 • [norris-stevens.com](http://norris-stevens.com)

# 2242 N WILLIAMS AVE

Portland, OR 97227

# FOR LEASE

## PHOTOS + FLOOR PLAN



For more information or a property tour, please contact:

**GABE SCHNITZER**  
503.225.8443  
GabeS@norris-stevens.com

**GREG NESTING**  
503.225.8440  
GregN@norris-stevens.com

**LUIS MARTIN DEL CAMPO**  
503.416.8422  
LuisM@norris-stevens.com

## Norris & Stevens

INVESTMENT REAL ESTATE SERVICES



Information contained herein has been obtained from others and considered to be reliable; however, a prospective purchaser or lessee is expected to verify all information to their own satisfaction.

900 SW 5th Avenue • 17th Floor • Portland, OR 97204  
503.223.3171 • [norris-stevens.com](http://norris-stevens.com)