

2927-2933 E BURNSIDE ST

Portland, OR 97214

FOR LEASE



RETAIL/OFFICE SPACE FOR LEASE

DETAILS

- Space size: $\pm 5,019$ SF – Floor 1
 ± 0.33 AC lot
- Lease rate: Call brokers for rate
- Zoning: CM2

FEATURES

- Flexible office/retail/medical build out available
- Multiple storefront entrances
- Freestanding building with off-street parking available
- High visibility with $\pm 7,400$ VPD off E Burnside Street
- Minutes from downtown Portland and major transportation arterials
- Surrounding tenants include: Whole Foods, Laurelhurst Theatre, Paade, and Laurelhurst Market



DEMOGRAPHICS

	1 MILE	3 MILES
Population	34,216	248,108
Households	18,291	126,632
Median Age	37.3	38.3
Median Household Income	\$96,603	\$98,558
Daytime Employees	17,593	215,806

10.04.2024

For more information or a property tour, please contact:

GABE SCHNITZER

503.225.8443

GabeS@norris-stevens.com

GREG NESTING

503.225.8440

GregN@norris-stevens.com

LUIS MARTIN DEL CAMPO

503.416.8422

LuisM@norris-stevens.com

Norris & Stevens

INVESTMENT REAL ESTATE SERVICES



Information contained herein has been obtained from others and considered to be reliable; however, a prospective purchaser or lessee is expected to verify all information to their own satisfaction.

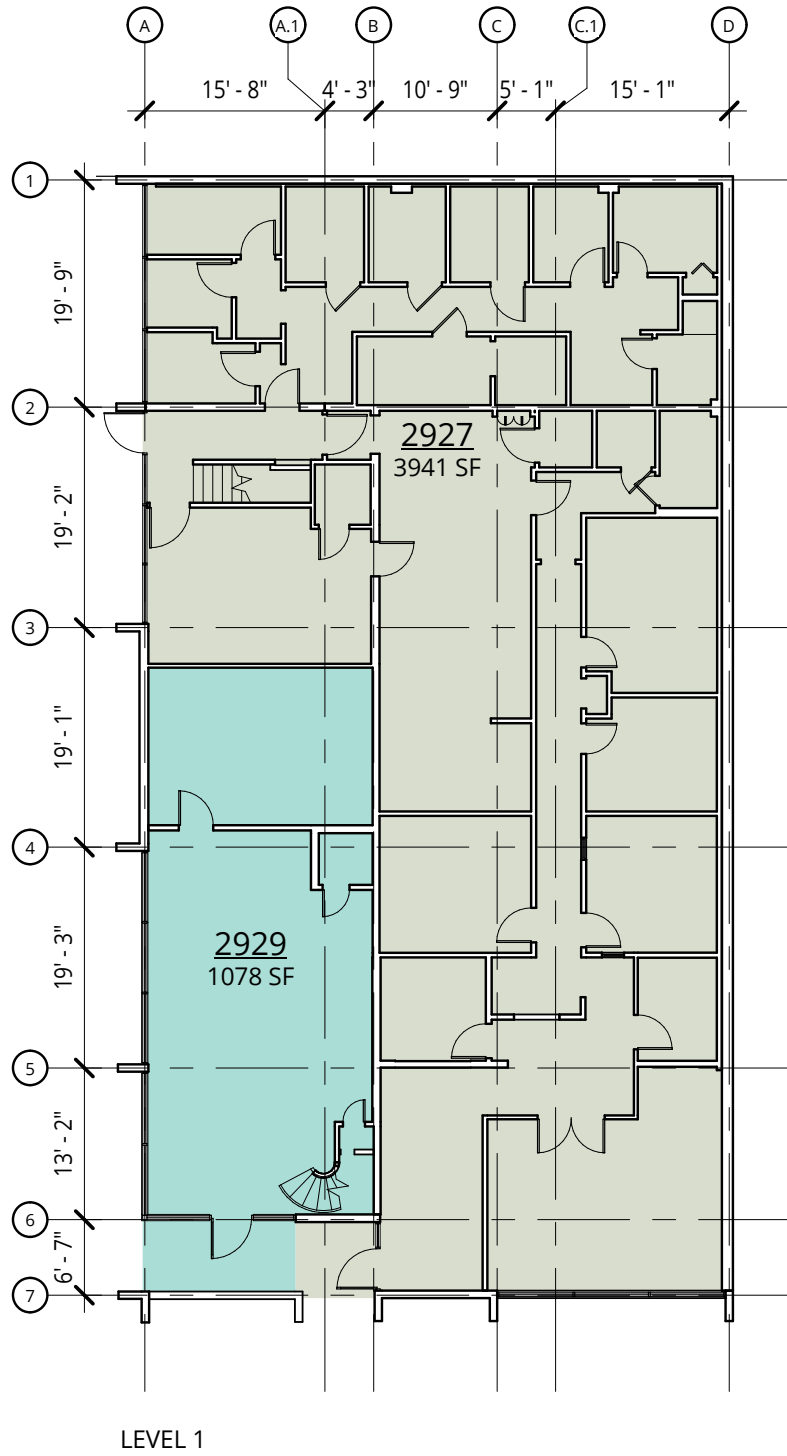
900 SW 5th Avenue • 17th Floor • Portland, OR 97204
503.223.3171 • norris-stevens.com

2927-2933 E BURNSIDE ST

Portland, OR 97214

FOR LEASE

FLOOR PLAN



For more information or a property tour, please contact:

GABE SCHNITZER
503.225.8443
GabeS@norris-stevens.com

GREG NESTING
503.225.8440
GregN@norris-stevens.com

LUIS MARTIN DEL CAMPO
503.416.8422
LuisM@norris-stevens.com

Norris & Stevens

INVESTMENT REAL ESTATE SERVICES



Information contained herein has been obtained from others and considered to be reliable; however, a prospective purchaser or lessee is expected to verify all information to their own satisfaction.

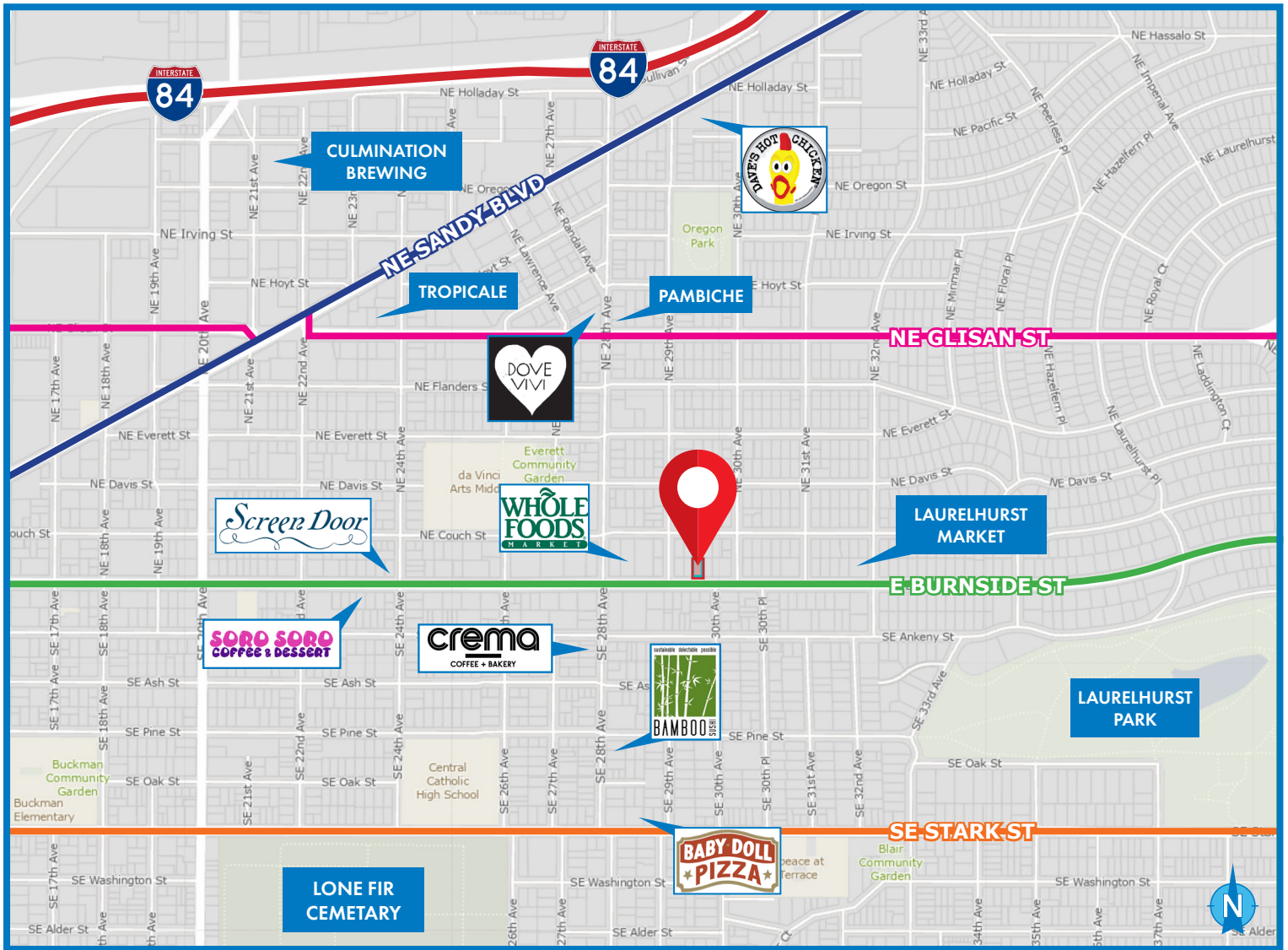
900 SW 5th Avenue • 17th Floor • Portland, OR 97204
503.223.3171 • norris-stevens.com

2927-2933 E BURNSIDE ST

Portland, OR 97214

FOR LEASE

PROPERTY PHOTOS & MAP



WALK SCORE
97

BIKE SCORE
94



For more information or a property tour, please contact:

GABE SCHNITZER
503.225.8443
GabeS@norris-stevens.com

GREG NESTING
503.225.8440
GregN@norris-stevens.com

LUIS MARTIN DEL CAMPO
503.416.8422
LuisM@norris-stevens.com

Norris & Stevens

INVESTMENT REAL ESTATE SERVICES



Information contained herein has been obtained from others and considered to be reliable; however, a prospective purchaser or lessee is expected to verify all information to their own satisfaction.

900 SW 5th Avenue • 17th Floor • Portland, OR 97204
503.223.3171 • norris-stevens.com